



PURE HOMES

Product Brochure





OUR SOLUTION

The Pure Effect

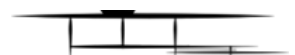
Pure Homes is a complete turn key living solution that has been carefully crafted and developed from the ground up with luxury and indoor outdoor flow being key.

Designed to be enjoyed: Designed for both hot and cold climates. It's made from durable sustainable building materials that stand the test of time. Quality finishings throughout to ensure an amazing experience. The finishing are as you would see in a 5 star resort with all the quality creature comforts. Unbelievable immersive views with full floor to ceiling glass windows and doors allowing an amazing indoor outdoor experience.

For your peace of mind: Designed with very low maintenance in mind. The rigid glass and steel structure provides ample protection from all elements from snow to cyclonic conditions (only to C2). Enjoy our fully integrated one-way glass system that ensures your privacy while also helping climate control. We use qualified reputable local manufactures where we can to ensure quality and years of trouble free living. This also ensures that your money stays in the local economy.

Pure Homes is a well designed and engineered affordable solution that can be yours with minimal disruption and timeframes.

Speak to our team about making your plans come to life - Challenge us!





ABOUT Pure Homes

We're creators and collaborators



At Pure Homes – We believe you can live the life you desire by creating amazing experiences and places to make those happen. Pure Homes is founded on European design and expertise combined with locally Australian made materials and systems to create a new level of quality, flexibility and innovation.

Minimalist design is about prioritizing the essential. A minimalist building, object, or interior design is stripped to its core function, realized using limited materials, neutral colors, simple forms, and avoiding excess ornamentation to achieve a pure form of elegance. While the final expression of a minimalist design might appear effortlessly simple, as spare as a poem and as clear as a bell, achieving this kind of powerful simplicity is anything but easy.





KEY FEATURES

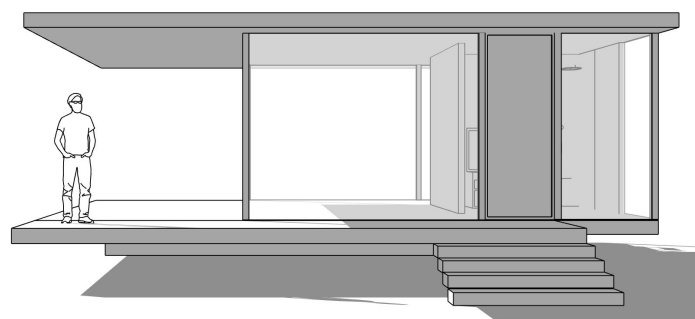
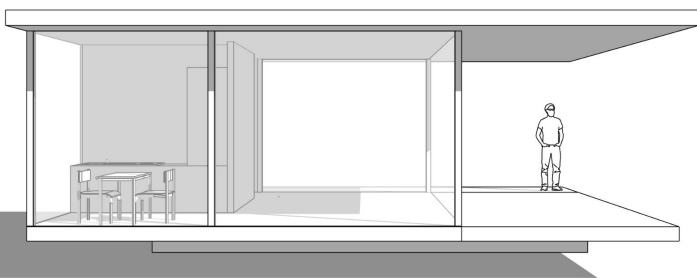
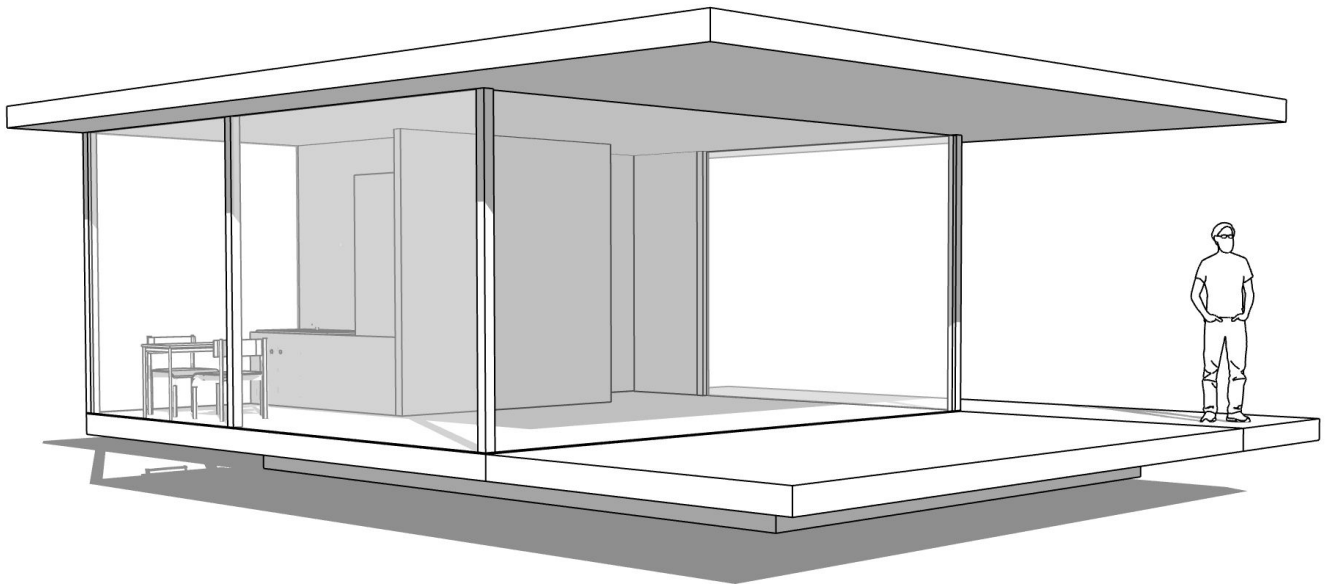
Sustainable and efficient

- Passive House design, Very low environmental footprint
- Stuntings high roof with 2.7m floor to ceiling windows
- Low scale minimal environmental impact
- Safe – Meets building compliance codes
- Durable, environmentally sustainable design
- Built from durable non toxic materials
- Passive energy efficient design
- Compatible with solar battery and mains power
- Local manufacturers and suppliers
- One way glass ensure privacy



OUR FLAGSHIP PRODUCT

PURE STUDIO - CLASSIC, RETREAT, DUO

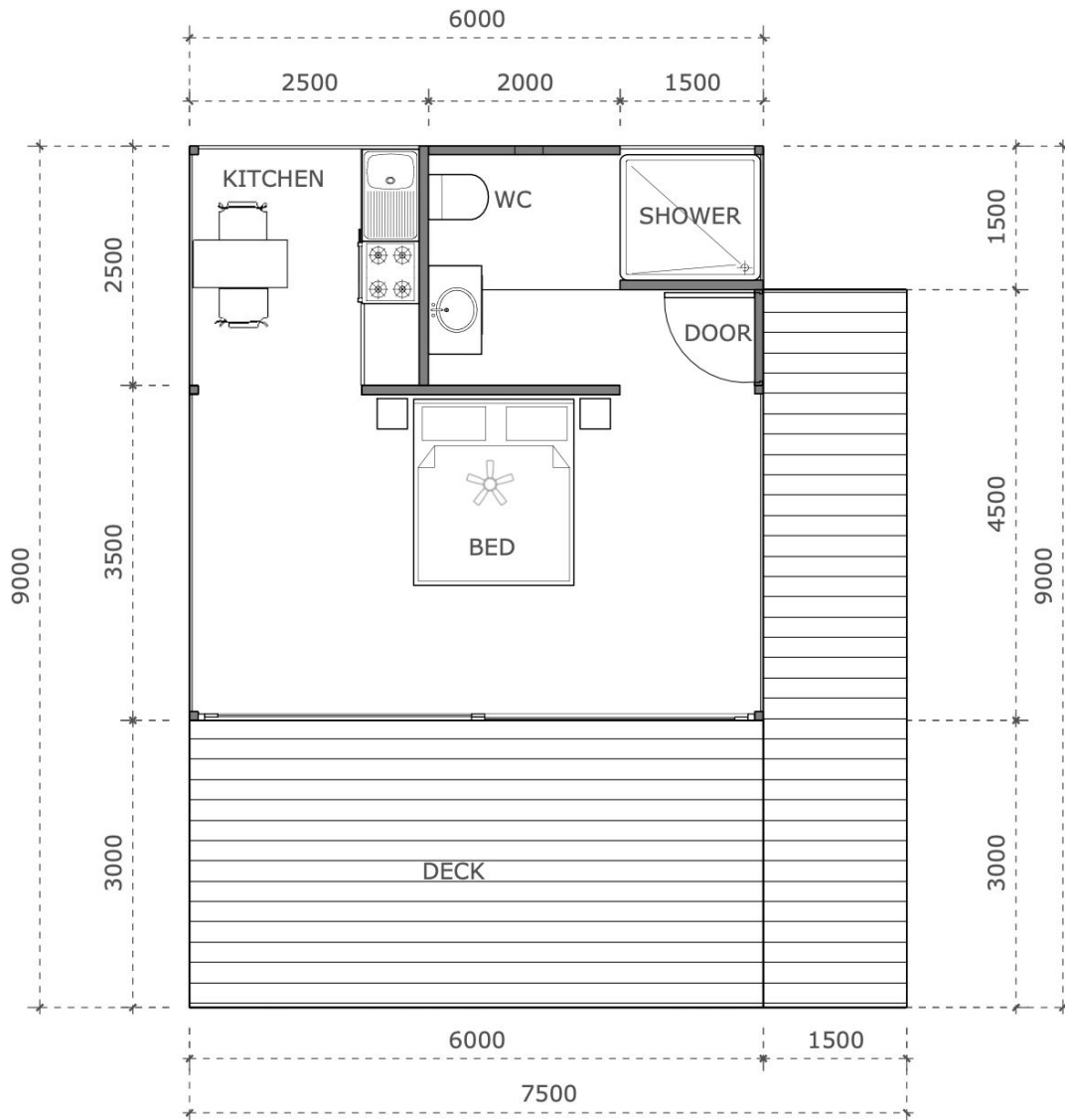


OUR FLAGSHIP PRODUCT

PURE STUDIO - 'CLASSIC'

From \$182,400*

- 1x Kitchen
- 1x Bathroom
- 1x Bedroom



*See product specifications page for detailed pricing

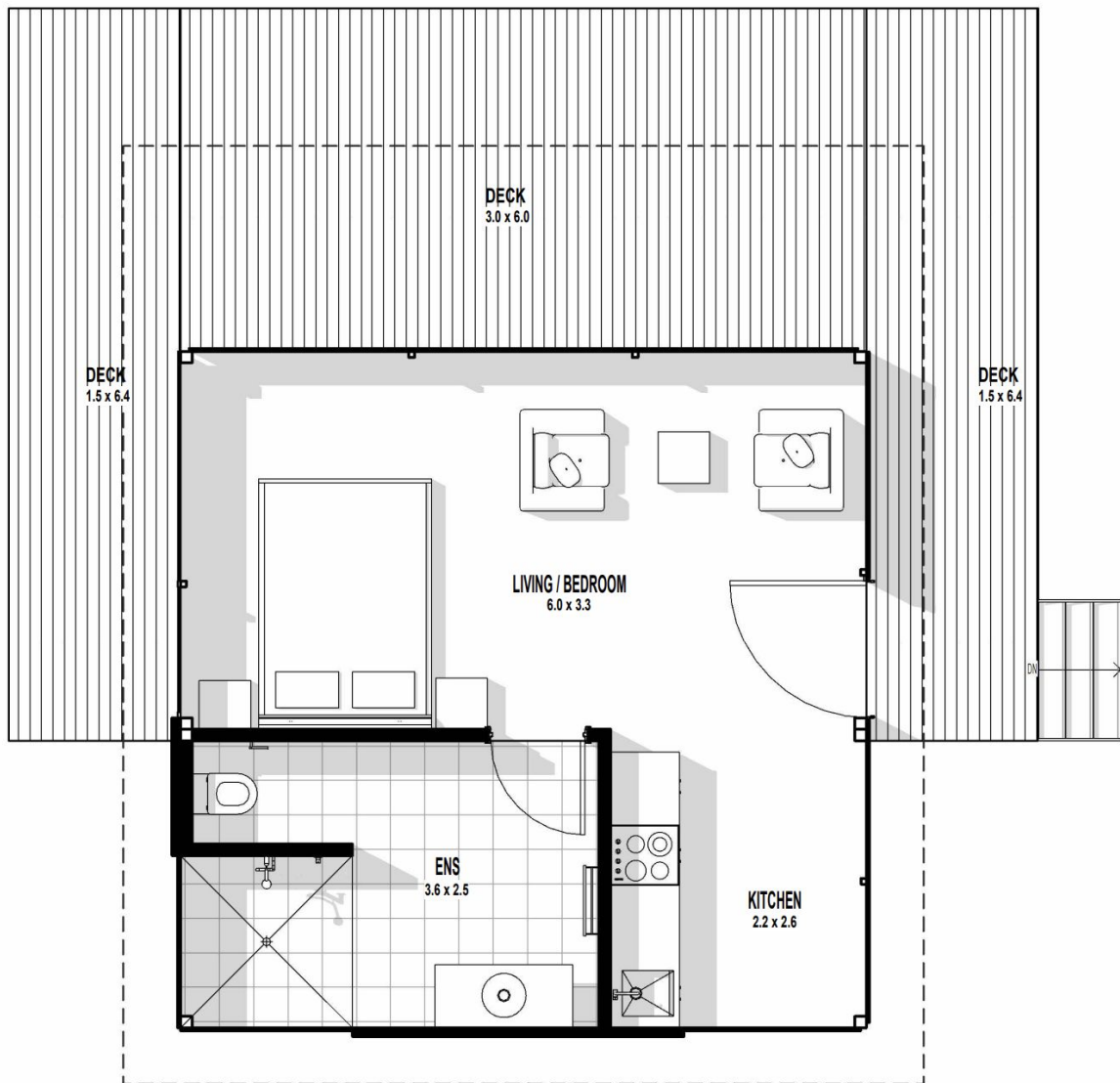


OUR FLAGSHIP PRODUCT

PURE STUDIO - 'RETREAT'

From \$182,400*

- 1x Kitchen
- 1x Bathroom
- 1x Bedroom



*See product specifications page for detailed pricing

All drawings are subject to Copyright Law and to the Copyright Act 1965. All rights are retained by Purehomes. Purehomes plans and or designs cannot be reproduced in any shape or form without prior written authorisation.

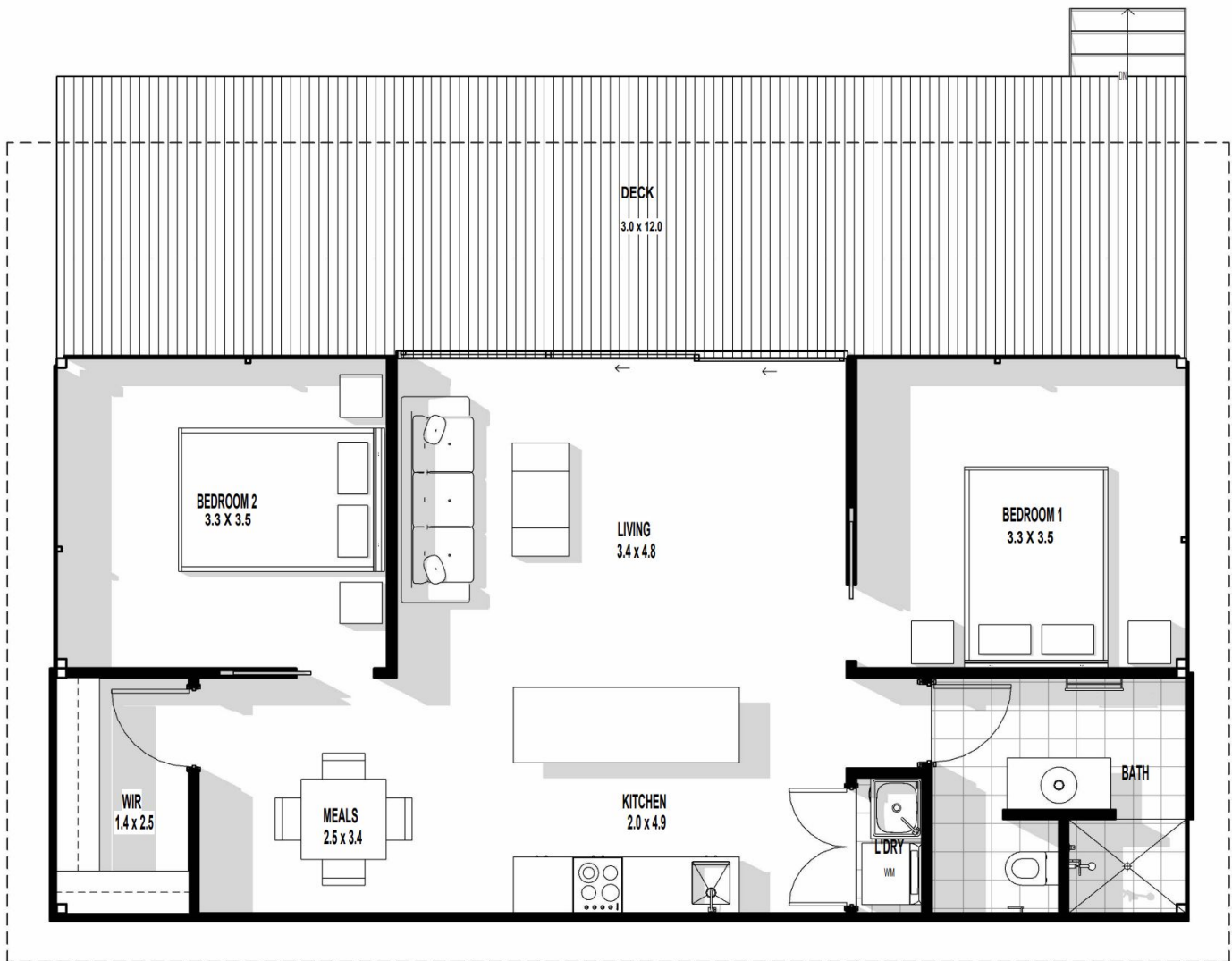


OUR FLAGSHIP PRODUCT

PURE STUDIO - 'DUO'

From \$384,000

- 1x Kitchen
- 1x Bathroom
- 2x Bedrooms
- 1x Living room



*See product specifications page for detailed pricing

All drawings are subject to Copyright Law and to the Copyright Act 1965. All rights are retained by Purehomes. Purehomes plans and or designs cannot be reproduced in any shape or form without prior written authorisation.



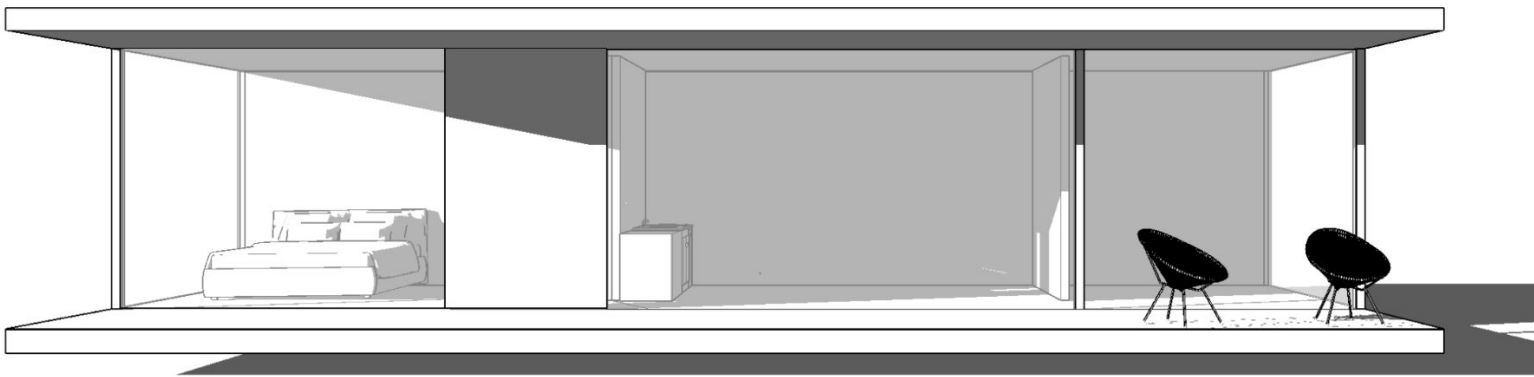
THE LAYOUT

PURE LAYOUT (options)



THE SECOND POD OF THE PURE FAMILY

PURE Mini 6, 10, 14 series



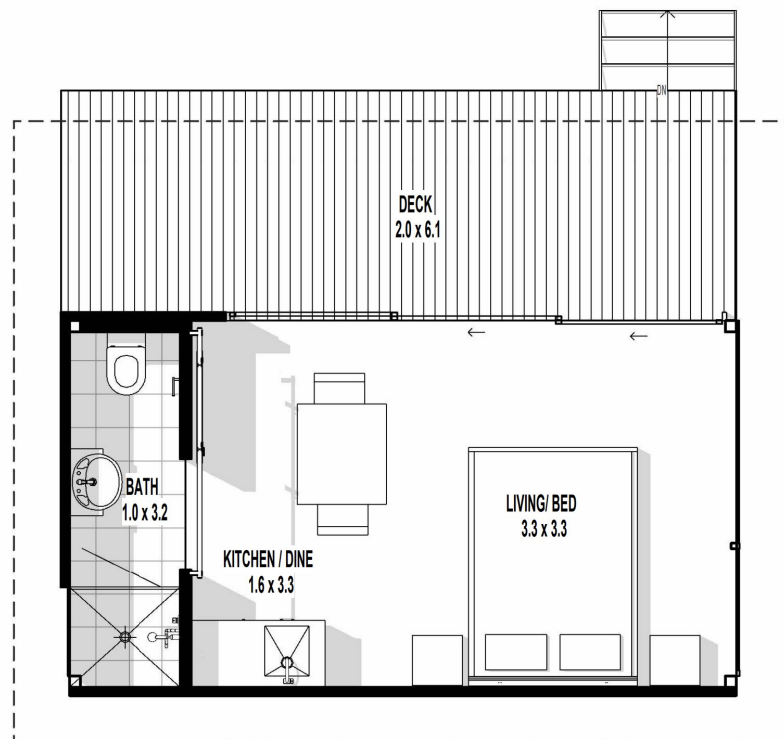
THE SECOND POD OF THE PURE FAMILY

PURE MINI 6

From \$84,800*

- 1x Kitchen
- 1x Bathroom
- 1x Bedroom

The MINI 6 is the smallest option of the three models in the Pure Homes MINI line. It is the perfect modular pod for a high-end luxury home office, short-term stay guest house/granny flat or relocatable AirBnB investment properties.



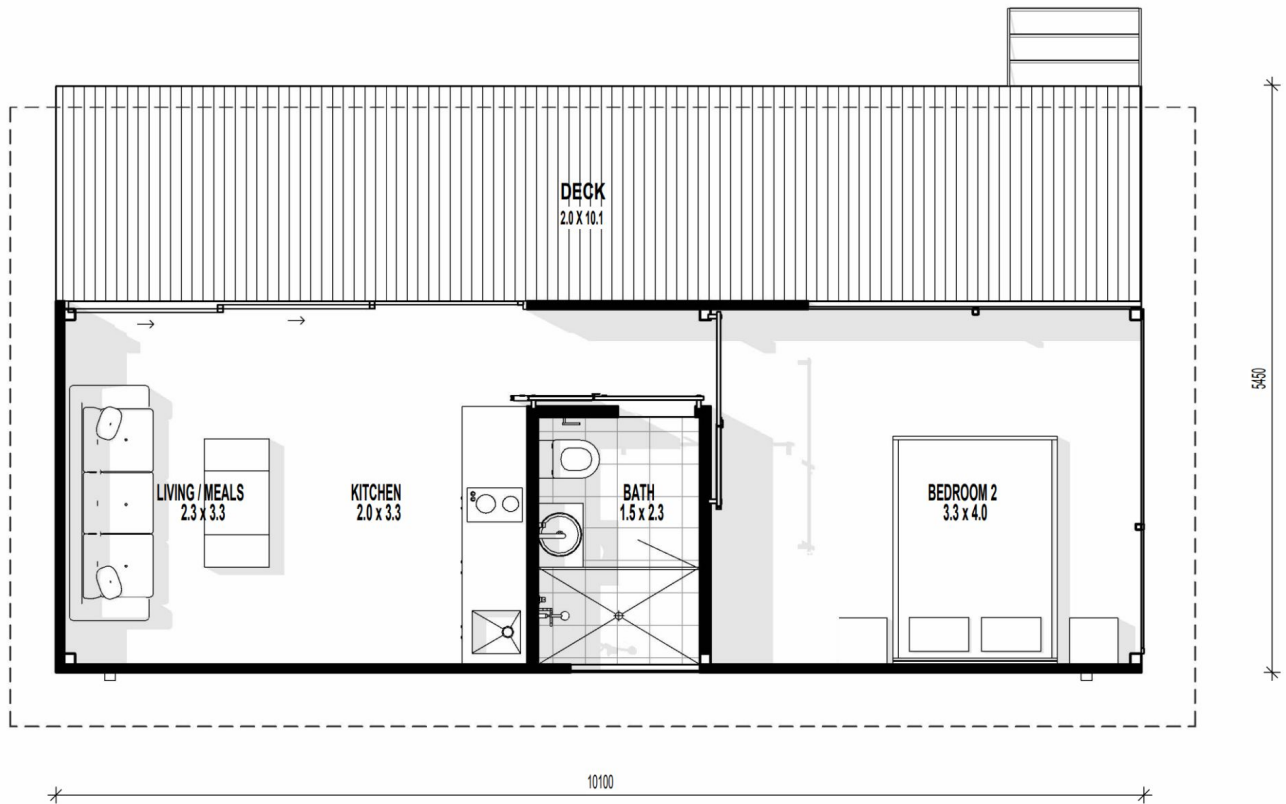
THE SECOND POD OF THE PURE FAMILY

PURE MINI 10

From \$136,800*

- 1x Kitchen
- 1x Bathroom
- 1x Bedroom
- 1x Living room

The MINI 10 is a step up from the MINI 6, adding a living room space. This allows the MINI 10 to become more of a viable luxury stay both for short-term and long-term. Much like the MINI 6, the MINI 10 is a great additional investment property to add to one's portfolio.



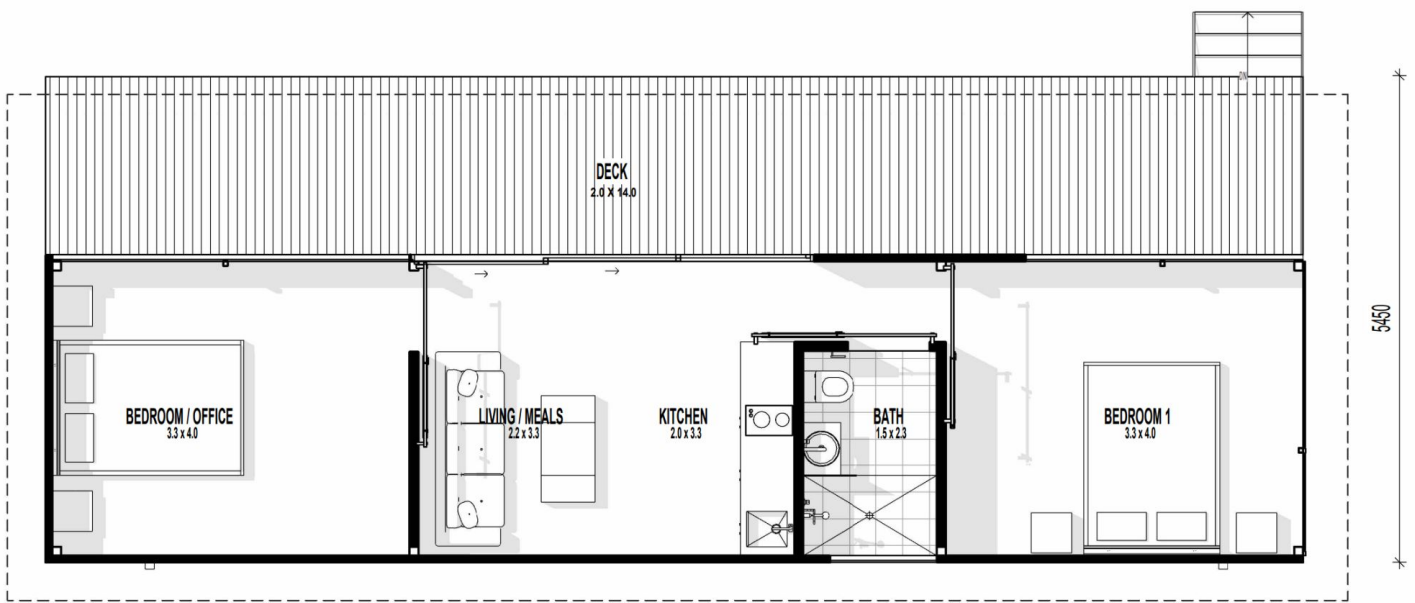
THE SECOND POD OF THE PURE FAMILY

PURE MINI 14

From \$172,000*

- 1x Kitchen
- 1x Bathroom
- 2x Bedrooms
- 1x Living room

The MINI 14 goes up even further from the MINI 10, adding a second bedroom space, which really elevates this product as a sustainable luxury long term stay option. This option can also be used to downsize current living options. Despite the much larger size compared to the MINI 6 model, the MINI 14 is still easily relocatable and can be moved to any area the customer wishes.



FROM DREAM TO REALITY

PURE Aqua



A UNIQUE OPPORTUNITY

Finance your pod

An investment that pays itself from day one?

Experienced hosts see PURE Homes products as a smart way of adding value to their existing property. Others see it as a way to jump starting their hospitality business.

The unique design and PURE factors allows the home to be rented out well above market prices.

Example Studio at \$150k as a overnight rental

- **Earnings:** \$400 per night @ 60% occupancy, Monthly Expected Earnings **\$8370 month***
- **Loan Repayment** Monthly loan repayments at 2.9% **\$870 per month***

Example Mini at \$75k as live in unit

- **Loan repayment weekly \$249** over 7 years





OUR PROCESS

Book your delivery date

Because of our unique modular design process, we are able to pre-manufacture a majority of the external structure, saving up to 80% of time working on site. This ultimately reduces waste by 20%, whilst also giving us time to build you a more superior and quality product.

- 1**  **LOCATION CHECK**
Building permits
Shipping quote
- 2**  **SIGNING THE CONTRACT**
Contract includes: Terms of payment, shipping terms, warranty, specifications
- 3**  **PAYMENT**
Payment options to be confirmed
Deposit taken
- 4**  **PRODUCTION IN FACTORY**
Estimated production time as per agreement
- 5**  **DELIVERY**
Shipping of final key components to be assembled on site (*Studio model only*)



ALL THE DETAILS YOU NEED

Product specifications

Every PURE model includes flooring system, joist and bearing, glass walls, exterior door & solar panel roof. Fitout and furniture as listed below.

| | STUDIO | DUO | AQUA |
|--|-----------|-----------|-----------|
| Pod only | \$182,400 | | - |
| Pod + Bathroom | \$198,100 | | - |
| Pod + Bathroom + Kitchen | \$211,100 | | - |
| Pod + Bathroom + Kitchen + Deck | \$234,100 | \$384,000 | \$422,400 |

| | MINI 6 | MINI 10 | MINI 14 |
|--|-----------|-----------|-----------|
| Pod only | \$84,800 | \$136,800 | \$172,000 |
| Pod + Bathroom | \$95,200 | \$147,300 | \$182,400 |
| Pod + Bathroom + Kitchen | \$105,500 | \$157,600 | \$192,800 |
| Pod + Bathroom + Kitchen + Deck | \$114,100 | \$172,000 | \$212,900 |

Extra

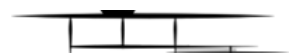
- Hanging Fireplace
- Under deck lighting
- Electric blinds

Color Scheme

- PURE White
- PURE Black Molasses

Do you want something outside this list? Don't hesitate to contact our team, we will be more than open to find the best deal and options for you.

Prices do not include delivery or GST - normal range add between \$2000-\$3500 for delivery



TYPICAL INCLUSIONS / EXCLUSIONS

Relax - We've got you covered

PURE Homes covers

- Interior finishing (incl. LED lights)
- Fully complete bathroom
- Fully complete kitchen
- Ventilation
- Heating/cooling
- Appliances (refrigerator, sink, extractor)
- Transport & Shipping coordination
- Crane coordination for unloading the unit

Owner covers

- Utilities connection and set-up
- (electricity, water, sewage)
- Sewage discharges to the tank, central sewer or septic system
- Consultant reports & surveys
- Onsite plumbing, including plumbing application
- Special requirements





Environmental

Regardless of who we are, where we live, and what we do, we all have a moral obligation to each other, our future generations, and other species to sustain the planet. Our present choices and actions have huge long-term impacts on future generations. At Pure Homes, we're dedicated to use sustainability practices and are trying to take into account everything, from manufacturing to logistics to customer service. Use of passive thermal design principles, tracking the sun, following the wind, and getting to know the weather patterns are some of the key things we take in consideration during the creation of our design.

We attach great importance to **the choice of the material** we use to reduce the environmental impact of building construction and operations. Our materials are locally sourced to keep a low balance of energy for transportation.

The modular aspect of Pure designs provide great benefits on the environment such as:

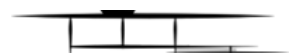
- Shorter time for construction, requires less energy and lower level of onsite pollution
- Less daily traffic and machinery required
- Lower level of noise pollution
- A large increase in recycling materials often discarded as waste on-site
- The reuse of complete structures, reassembled at different locations

Ensures a Future For All

Practicing sustainability ensures that we make ethical choices that bring a safe and livable future to everyone. If we deplete the resources of the Earth, future generations will be depleted. For example, if we over fish our oceans, we risk not only depleting the supply of fish, but also depleting the supply of every organism in the food chain related to that fish.

A Healthy Habitat For All

In the long-term, our society benefits from improved water and air quality, reduced landfills, and increased renewable energy sources. Sustainable actions help make a real difference in society. Being committed to sustainability will reduce your carbon footprint and the amount of toxins released into the environment, making it safe. When we focus on sustainability, the entire world benefits and gets to live in clean, more healthy living conditions.





Social

Diversity and Inclusion: We value diversity and inclusivity and strive to foster a culture of respect and equality in our workplace. We are dedicated to ensure that our products and services are accessible to all customers, regardless of their abilities or disabilities.

Community Engagement: We actively engage with the communities where we build our homes, listening to feedback and concerns to ensure that our homes meet the needs of the local residents.

Employee Welfare: We prioritize the safety and well-being of our employees, providing a safe and healthy working environment, fair wages & opportunities for professional growth and development.

Customer Satisfaction: We prioritize customer satisfaction and work closely with our clients to ensure that their needs and preferences are met.

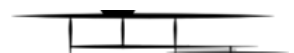
Governance

Ethical Business Practices: We conduct our business in an ethical and transparent manner, following all applicable laws and regulations and avoiding conflicts of interest.

Accountability: We take responsibility for our actions and are accountable to our stakeholders, including investors, employees, and customers.

Risk Management: We identify and manage risks to our business and take steps to mitigate any potential negative impacts.

Board Diversity: We value diversity at all levels of our organization, including our board of directors, which includes members with a variety of backgrounds and experiences.





PURE HOMES

www.purehomes.com.au

team@purehomes.com.au

1300 230 456

Instagram : [@purehomes.com.au](https://www.instagram.com/purehomes.com.au)

